

Ross Street Update

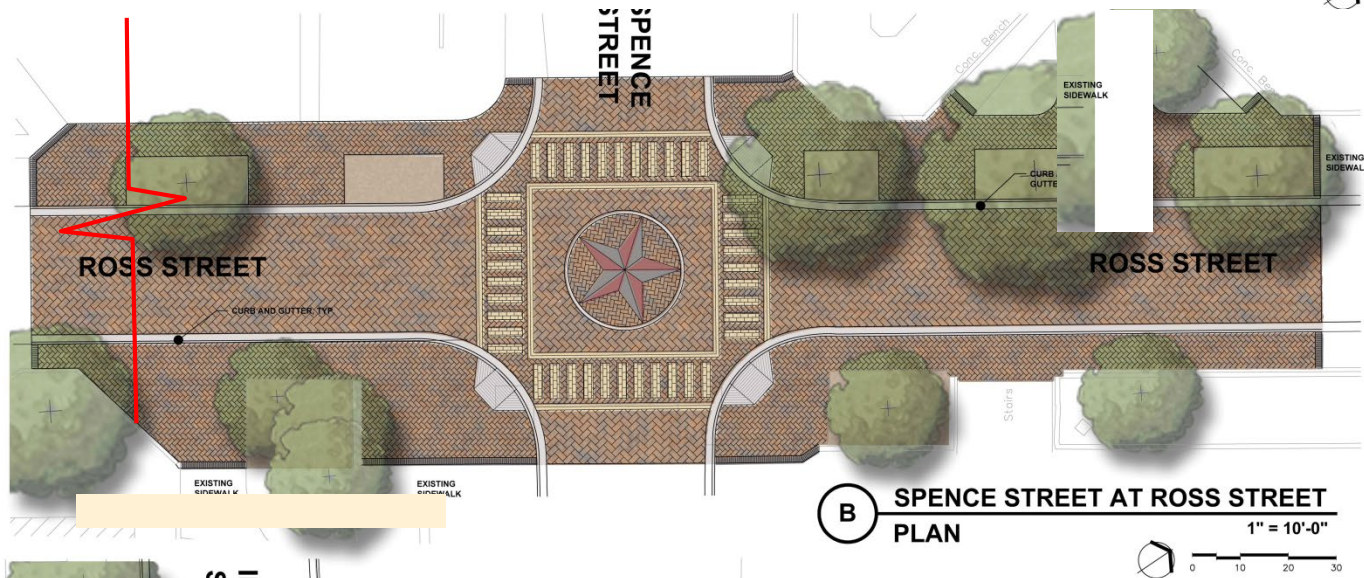
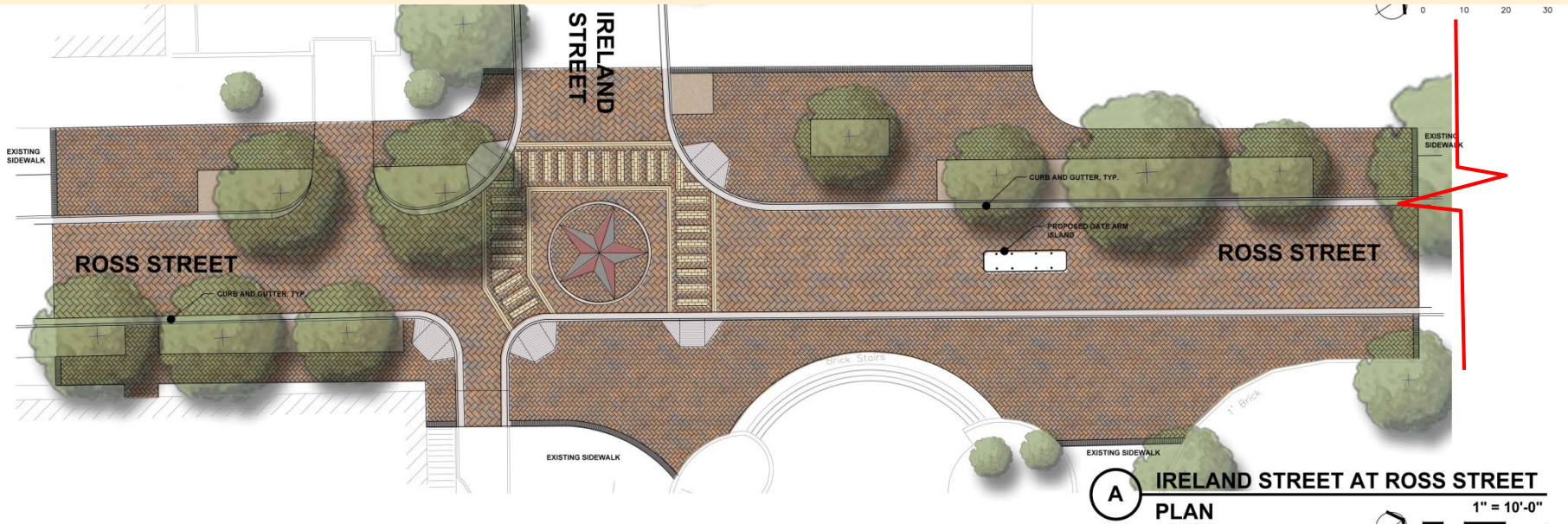
including the Northgate Pedestrian Project & Wellborn Grade Changes

Faculty Senate	Feb 14
TS Advisory Council	Feb 15
University Staff Council	Feb 15
Graduate Student Council	Feb 15
Employee Advisory Council	Feb 22
Student Senate	Feb 23
Open Forum	March 2
Open Forum	March 4
VP for Student Affairs	April 12
Council of Senior Business Administrators	April 20
Chief of Staff and Vice President of Administration	April 28
Division of Administration Student Advisory Board	May 3
Council of Senior Business Administrators Spring Workshop	May 19

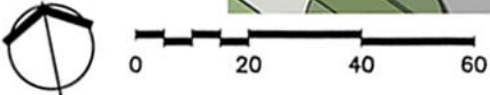
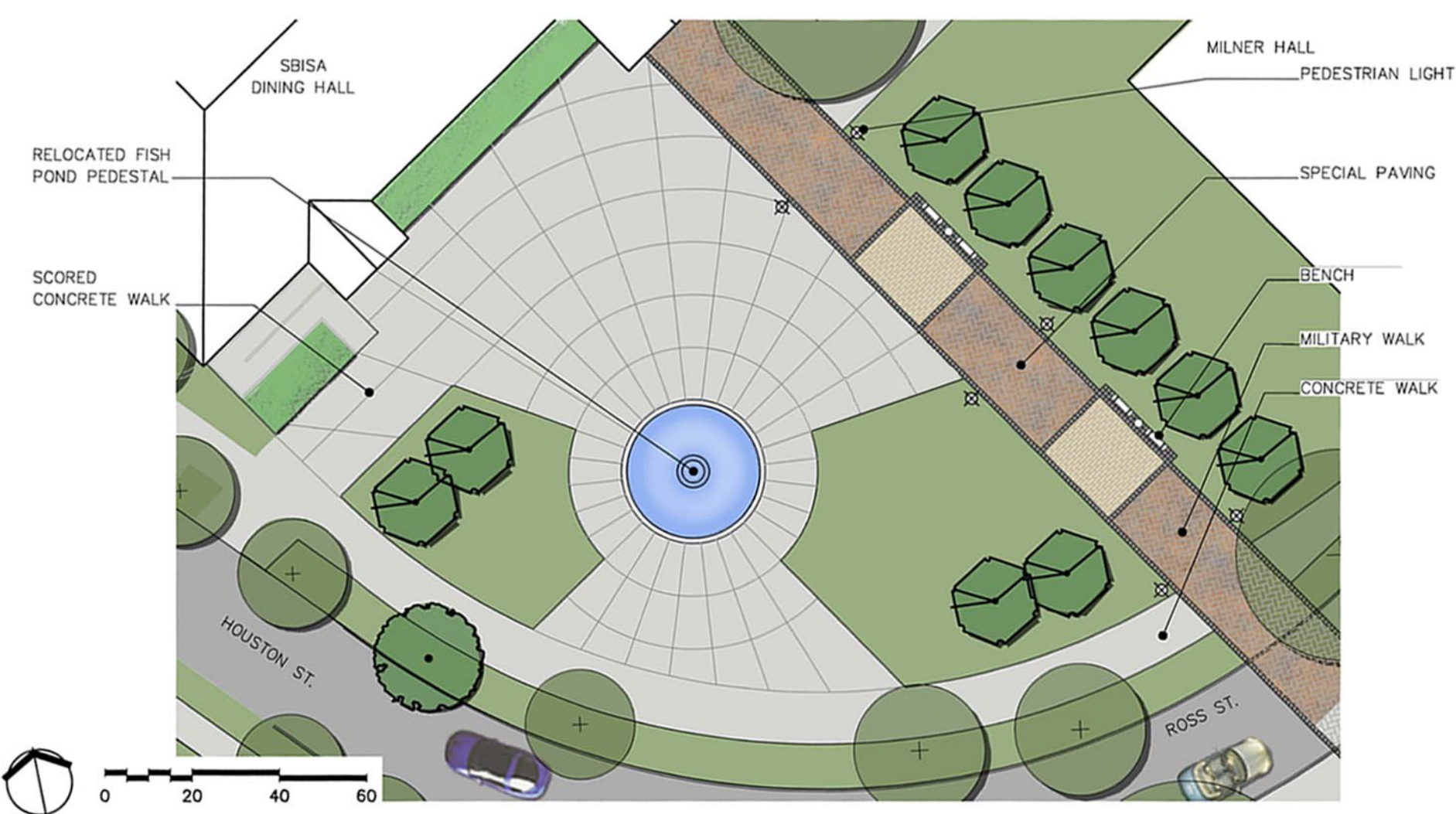
2011

Ross Street Paver Plan – Facilities Planning & Construction

Nov 2010 – Sep 2011



New Fish Pond Plaza – Facilities Planning and Construction



SCALE

Vision 2020

- **Imperative 8: Enrich Our Campus**
 - **Maintain and Enhance the Campus Environment**
 - ***“Movement of students, faculty, and staff around the campus should be convenient.”***
- ***“Maintain the pedestrian-friendly character of the campus as it grows.”***
- ***“special places that reinforce that narrative. Military Walk from Rudder Center to Sbisa Hall...”***



Ross Street facing east in front of Military Walk

Vision 2020



Military Walk facing south



Military Walk facing north



**Ross Street facing east looking across
Military Walk**

Campus Access & Parking Task Force

January 2000

- *Two prerequisites to any successful access system were identified by the task force as essential for safety, convenience and effectiveness of movement. They are as follows:*
 - **Remove the impediment created by the railroad on campus.**
 - **Manage the conflicts caused by the interaction of pedestrians and bicycles with vehicles.**

Campus Access & Parking Task Force

January 2000

- *Modify on-campus street system.*
 - Designated bus corridors
 - Ross Street repaired and reopened to transit vehicles only during the day, all vehicles at night
 - Fish Pond area available to transit vehicles
- *...Minimize pedestrian/vehicular conflicts...*
- *The safety of pedestrians should be ensured. Pedestrian safety is affected by how well the travel modes are integrated.*

Campus Access & Parking Task Force

January 2000

- *The pedestrian nature of campus is important. The system should be easy and friendly.*
- *Our pedestrian-oriented campus is, in other words, a priceless asset.*

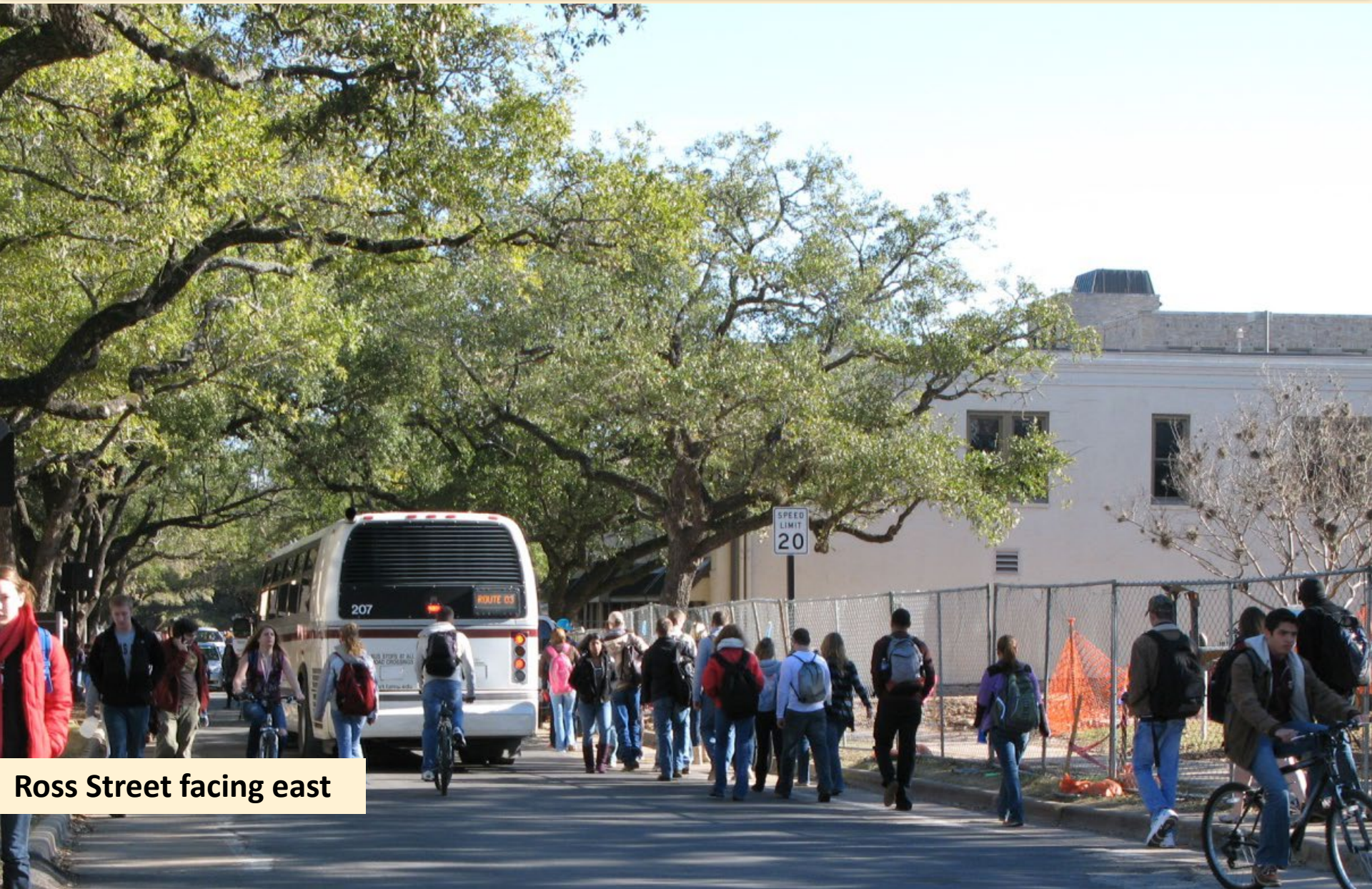
Campus Access & Parking Task Force

January 2000

- *... a campus that **combines several modes of transportation in an orderly manner to meet a variety of needs....predominantly pedestrian travel on campus, using comfortable, attractive and efficient pathways....***
- *manage the congestion caused by the **interaction of pedestrians and bicycles with vehicles on and around campus***



Ross Street facing east



Ross Street facing east



Ross Street facing east



Ross Street facing east in front of Sbisa

Campus Master Plan 2004

- ***“...keep private cars to the periphery, and make the campus an accessible, pedestrian one.”***
- ***“There is a sustainable, compact core that supports efficient and enjoyable pedestrian travel.”***
- ***“Excessive vehicular access to many parts of the campus conflicts with use by pedestrians.”***
- ***Limited access streets should be open to vehicular use from 6:00 pm to 6:00 am...***

Campus Master Plan 2004

- *“The Master Plan recommends **limiting the access of private vehicles** to certain paths within normal business hours.”*
- *“In addition to creating a need to provide parking for an astonishing number of cars, the introduction of so many cars on campus causes **conflicts with other modes of transportation...In general, private vehicles are not allowed access to the historic core of the campus during business hours.**”*



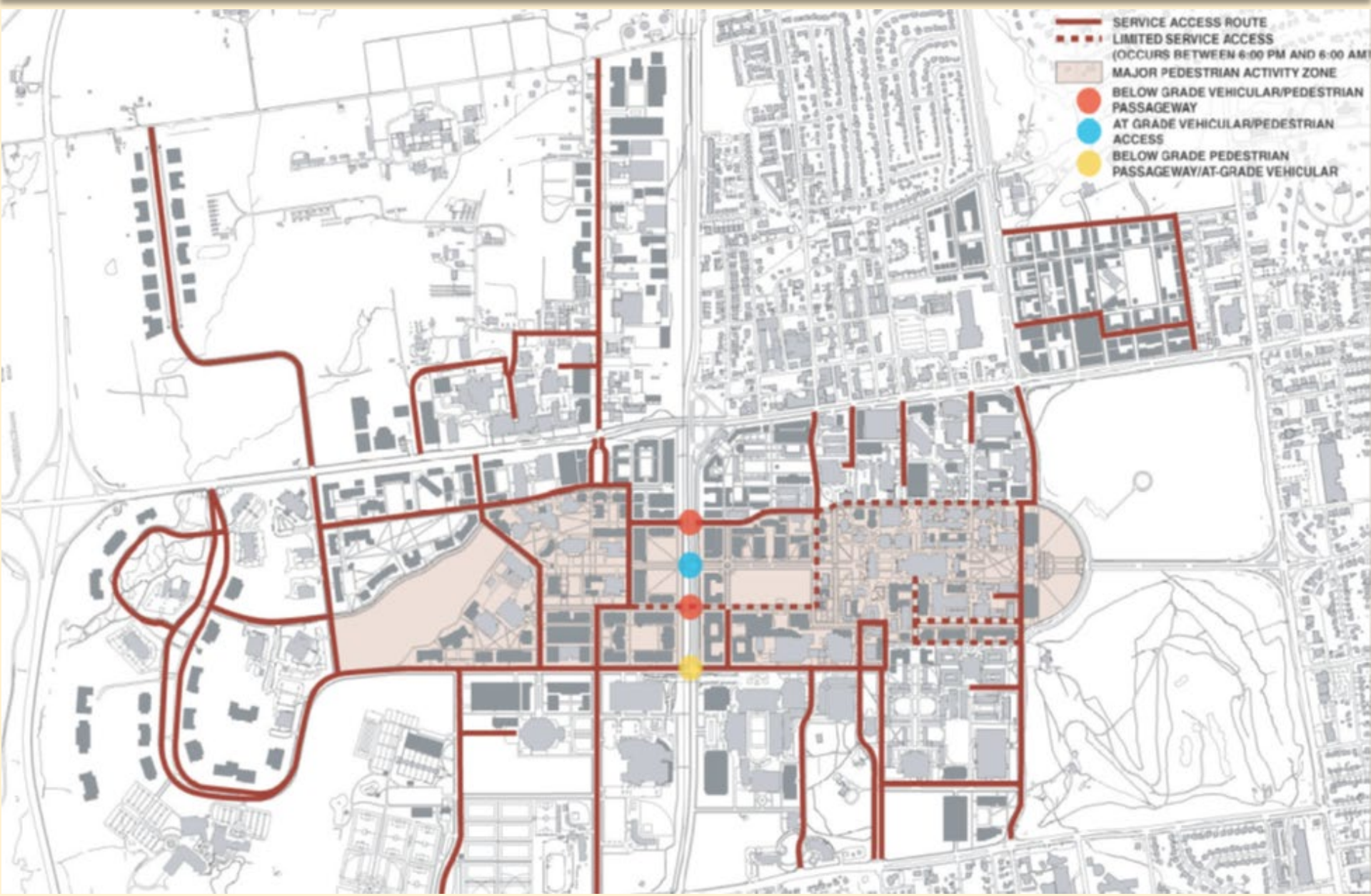
Ross Street facing east



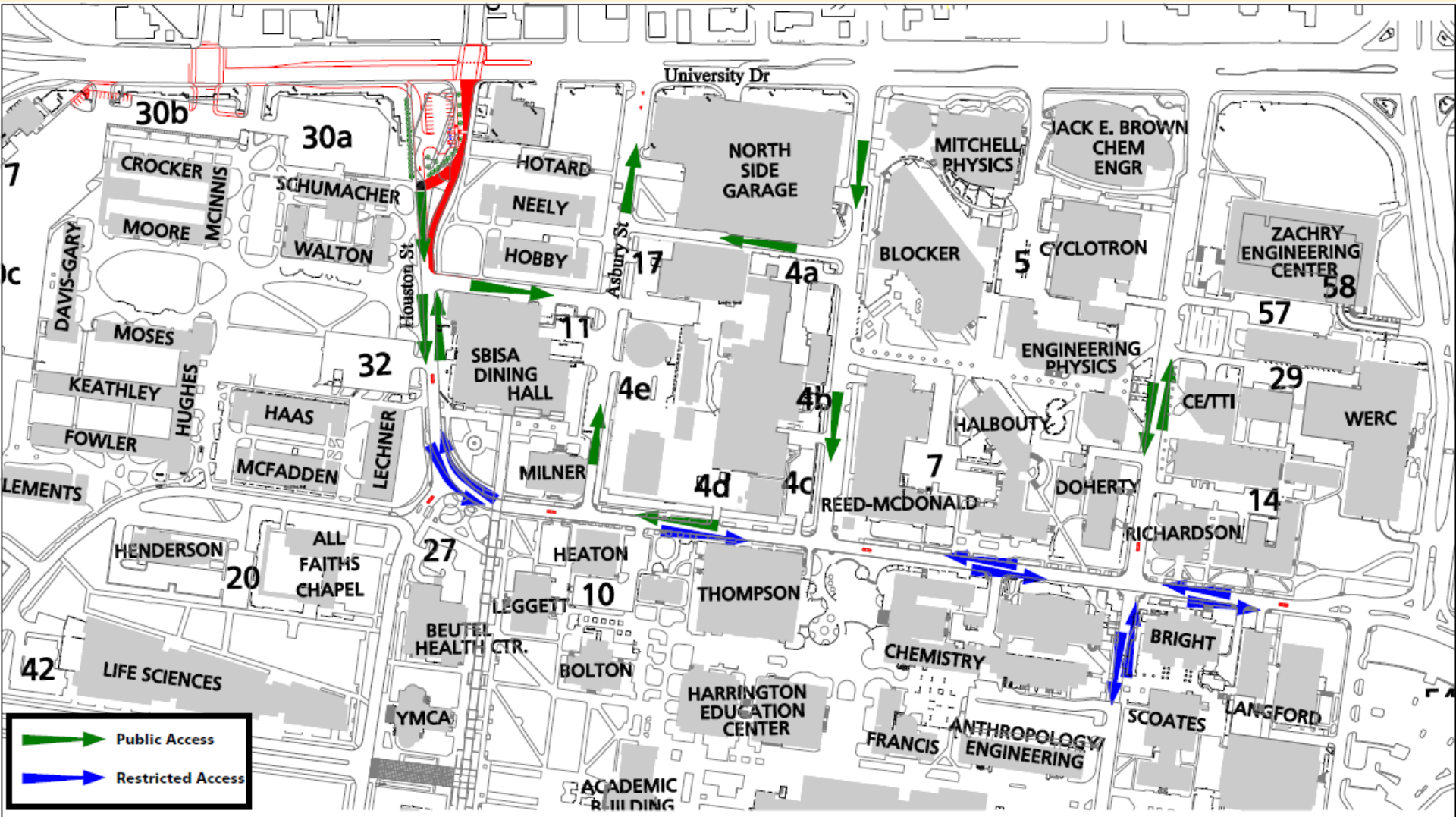
Military Walk facing south



Ross Street facing east in front of Sbisa



Ross Street Traffic Flow



Ross Street Project Timeline

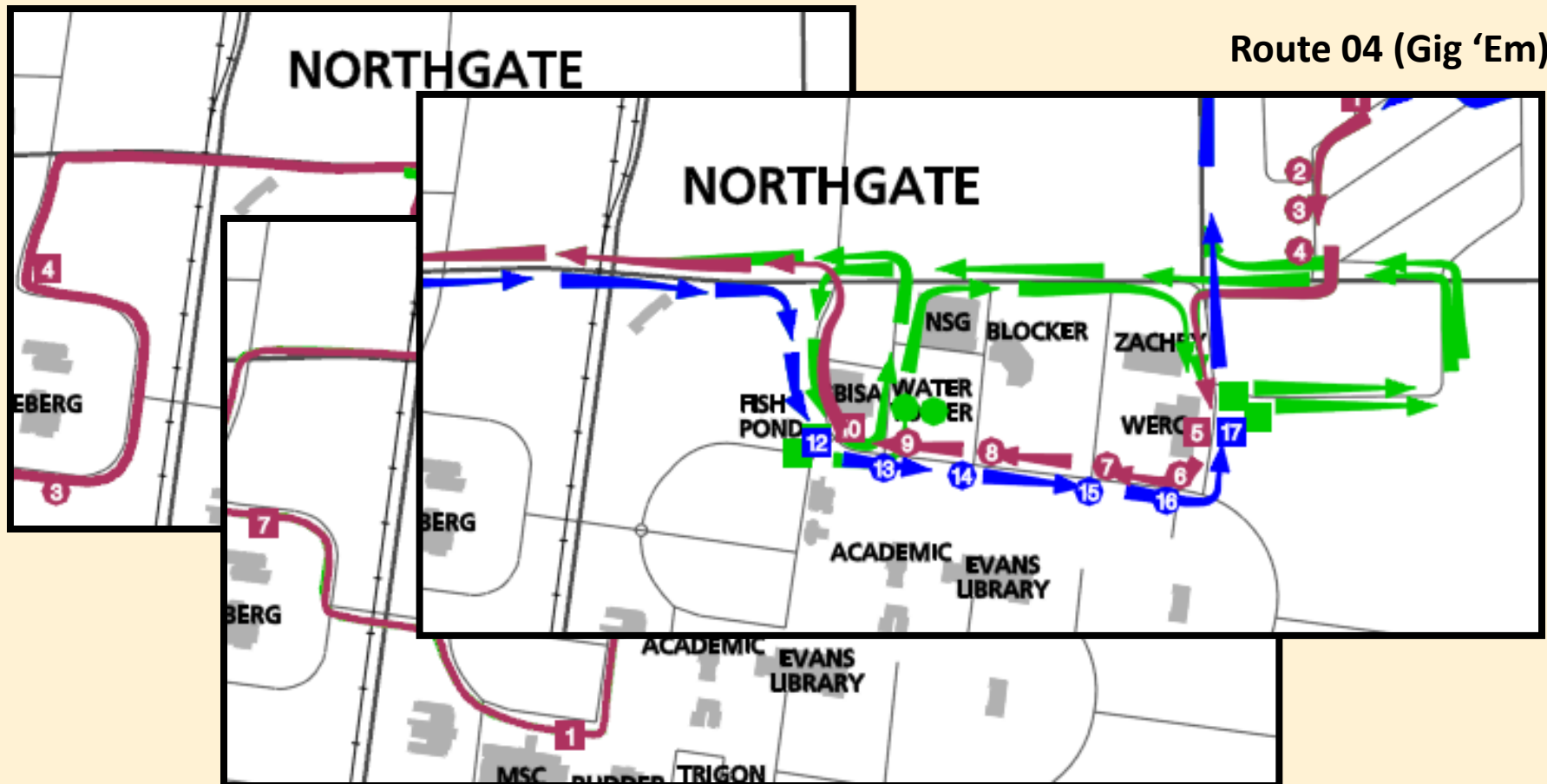
- FP&C Project
- \$4 million
- Ross Street Project begins Dec 2010
- Spence St open Feb 2011
- Ross Street Project complete Sep 2011

Ross Street Transit Impact

Green is current route

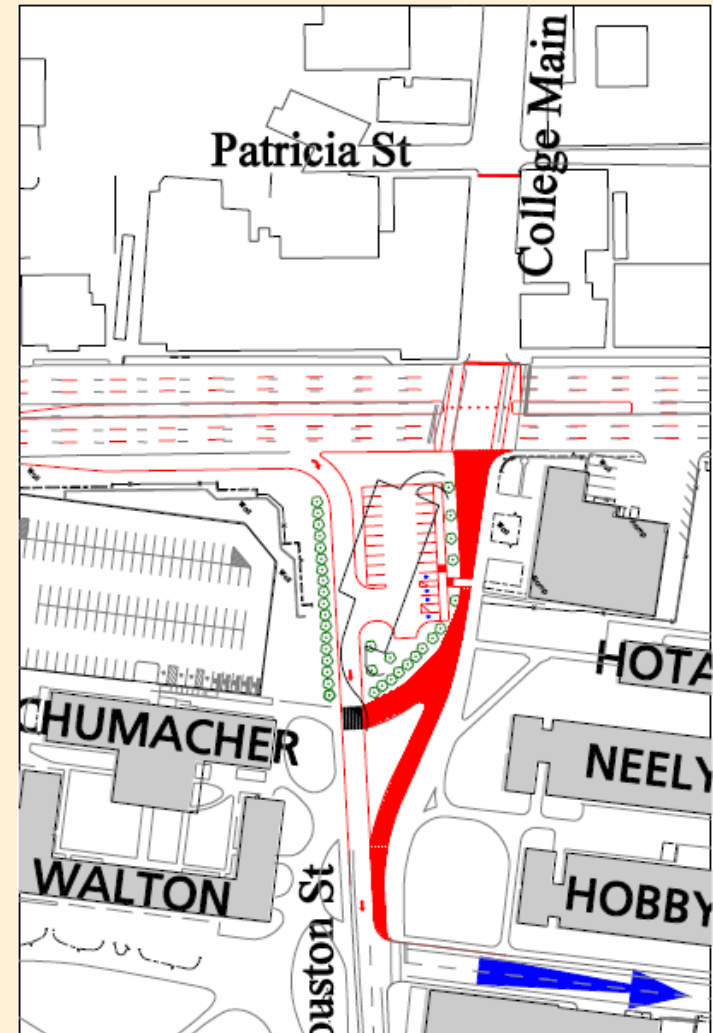
Route 01 (Bonfire)

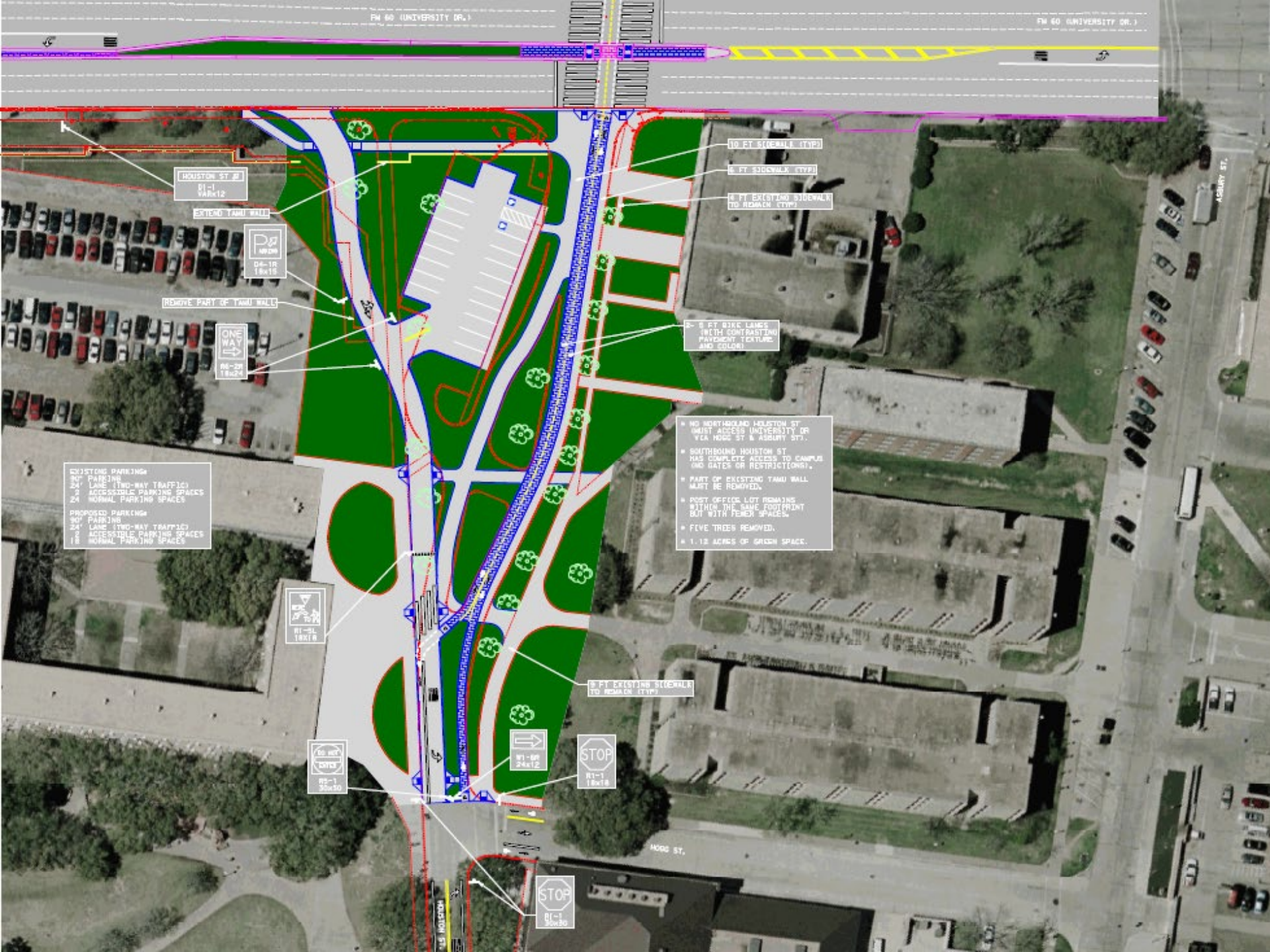
Route 04 (Gig 'Em)



Northgate Pedestrian Improvement

- TxDOT project
- TxDOT funded
- January 2012 – Sept 2012





HOUSTON ST #1
01-1 VAR12

EXTEND TAMU WALL

Pg 1800A
04-18 TRX15

REMOVE PART OF TAMU WALL

ONE WAY
06-20 TRX24

EXISTING PARKING
30' PARKING
24' LANE (TWO-WAY TRAFFIC)
20' ACCESSIBLE PARKING SPACES
24' NORMAL PARKING SPACES

PROPOSED PARKING
30' PARKING
24' LANE (TWO-WAY TRAFFIC)
20' ACCESSIBLE PARKING SPACES
18' NORMAL PARKING SPACES

01-01 TRX18

00-01 TRX10

01-01 TRX12

STOP
01-1 TRX18

STOP
01-1 TRX30

10 FT SIDEWALK (TYP)

8 FT SIDEWALK (TYP)

8 FT EXISTING SIDEWALK TO REMAIN (TYP)

5-8 FT BIKE LANES (WITH CONTRASTING PAVEMENT TEXTURE AND COLOR)

* NO NORTHBOUND HOUSTON ST MUST ACCESS UNIVERSITY DR VIA HOOD ST & ASBURY ST.

* SOUTHBOUND HOUSTON ST HAS COMPLETE ACCESS TO CAMPUS AND WATER OR RESTRICTIONS.

* PART OF EXISTING TAMU WALL MUST BE REMOVED.

* POST OFFICE LOT REMAINS WITHIN THE SAME FOOTPRINT BUT WITH FEWER SPACES.

* FIVE TREES REMOVED.

* 1.15 ACRES OF GREEN SPACE.

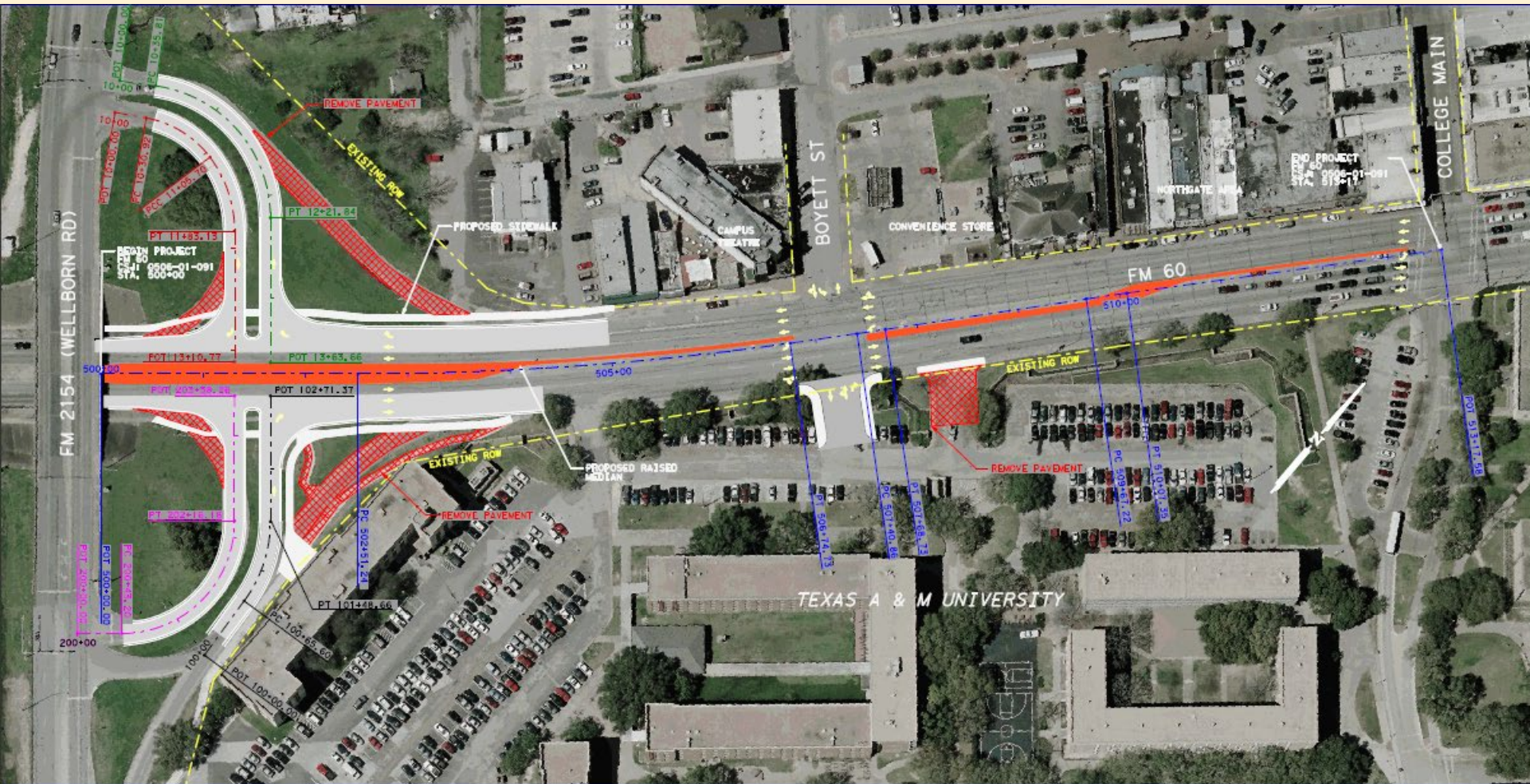
8 FT EXISTING SIDEWALK TO REMAIN (TYP)

HOOD ST.

ASBURY ST.

Northgate Pedestrian Improvement

January 2012 – September 2012

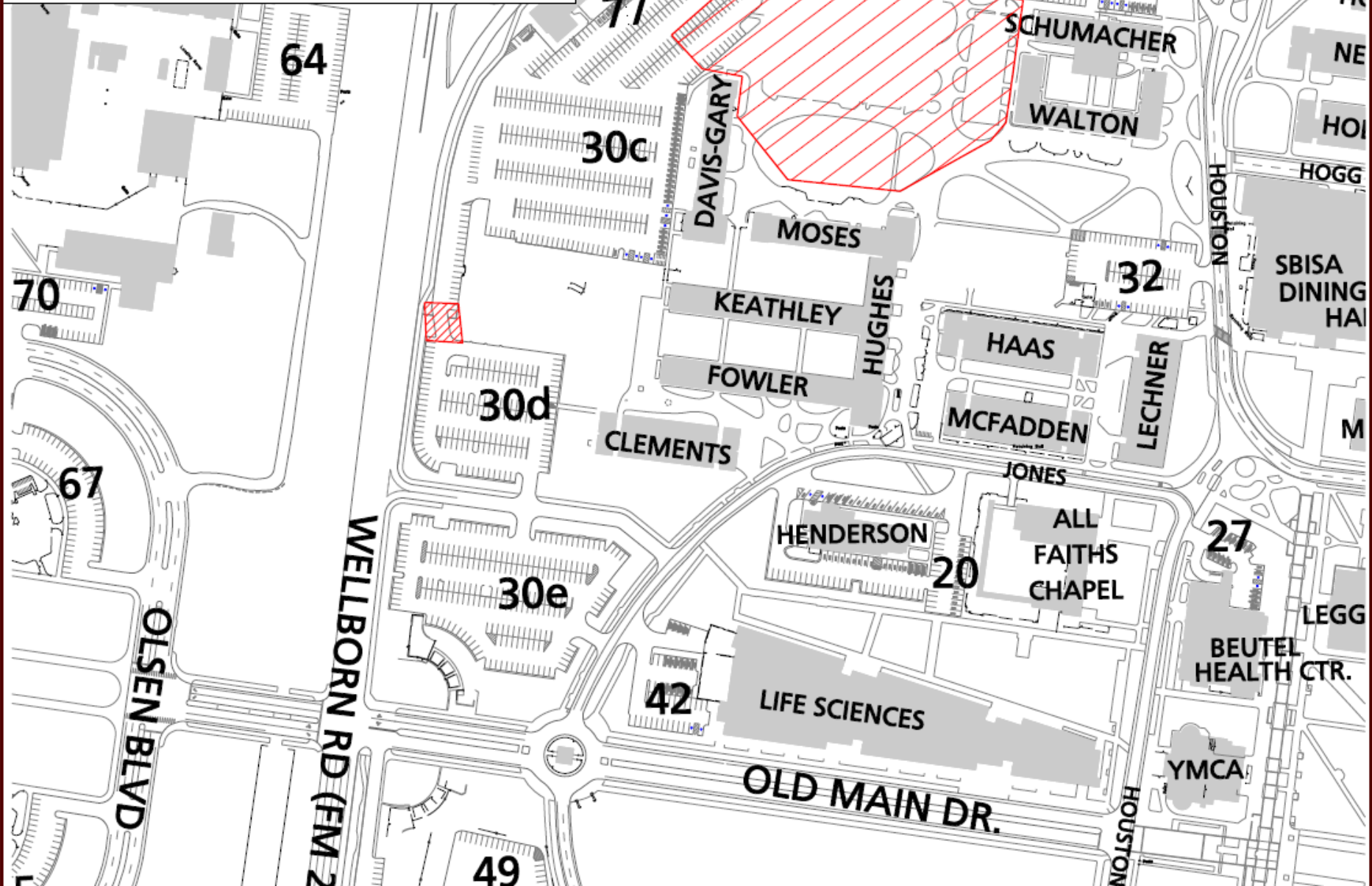


NORTHSIDE RESIDENCE HALLS

Dorm Construction

Phase 1

May 16 - June 16, 2011

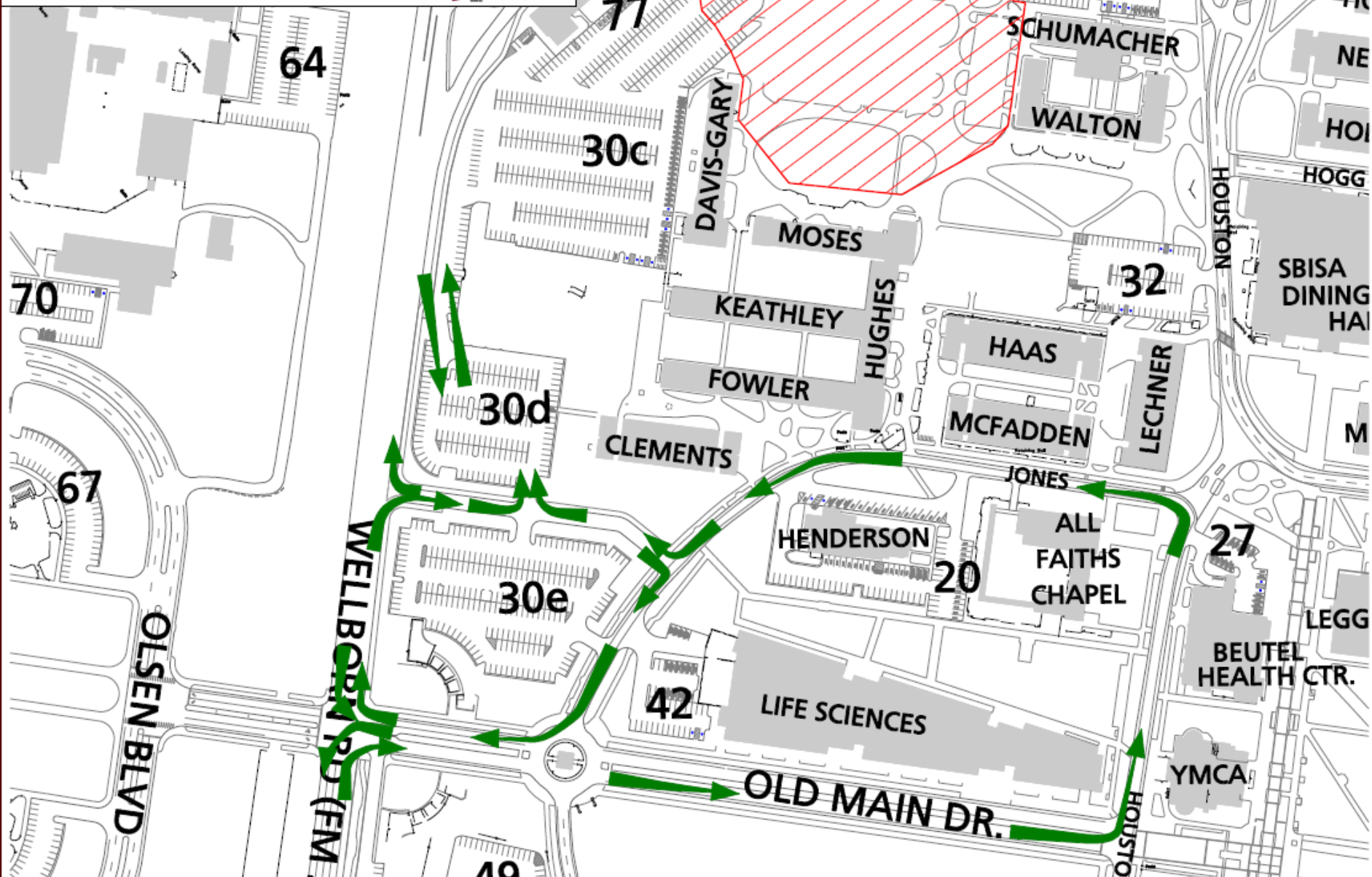


NORTHSIDE RESIDENCE HALLS

Dorm Construction

Phase 2

June 17 - June 23, 2011

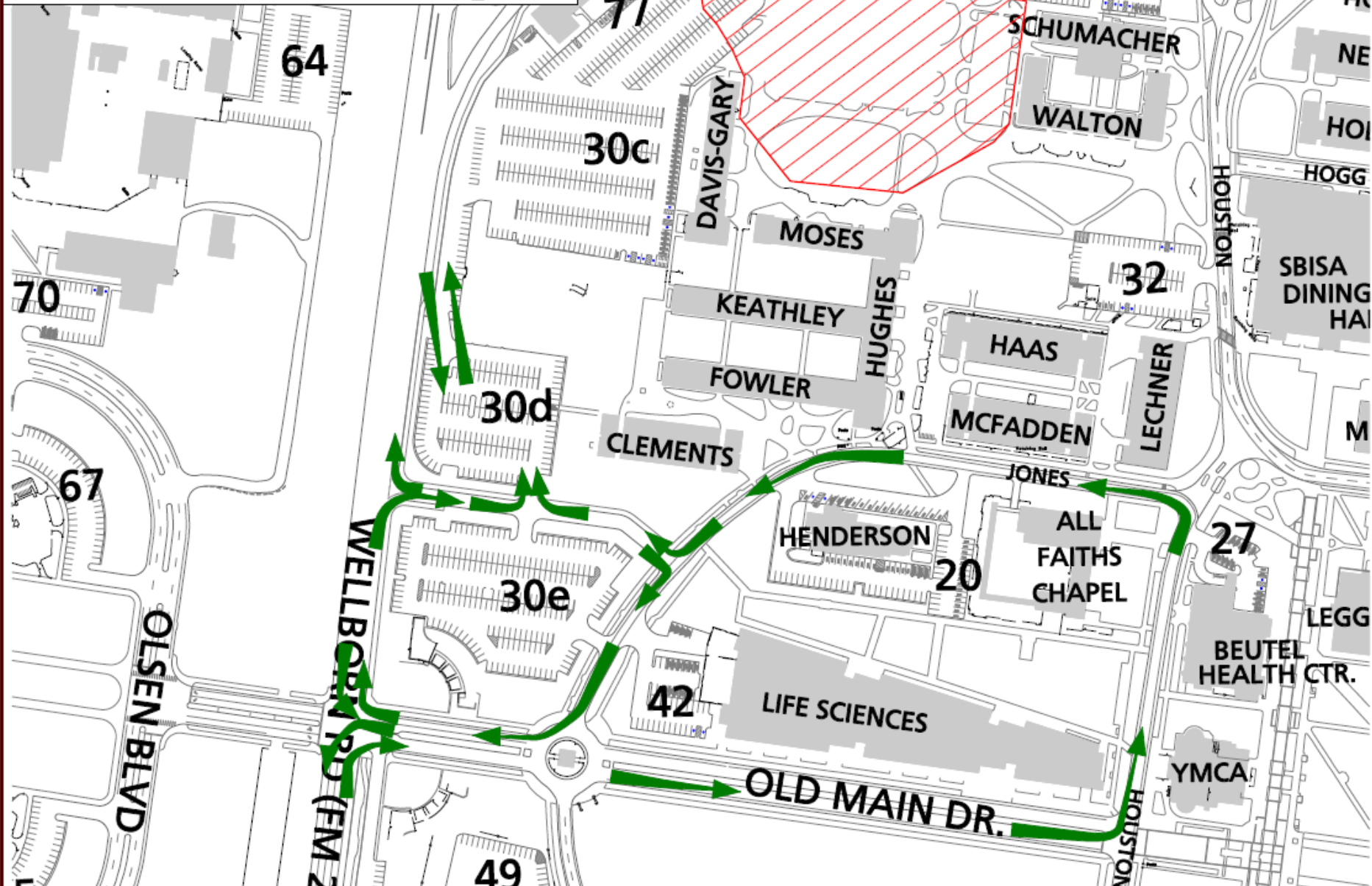


NORTHSIDE RESIDENCE HALLS

Dorm Construction

Phase 3

June 23 - July 2013

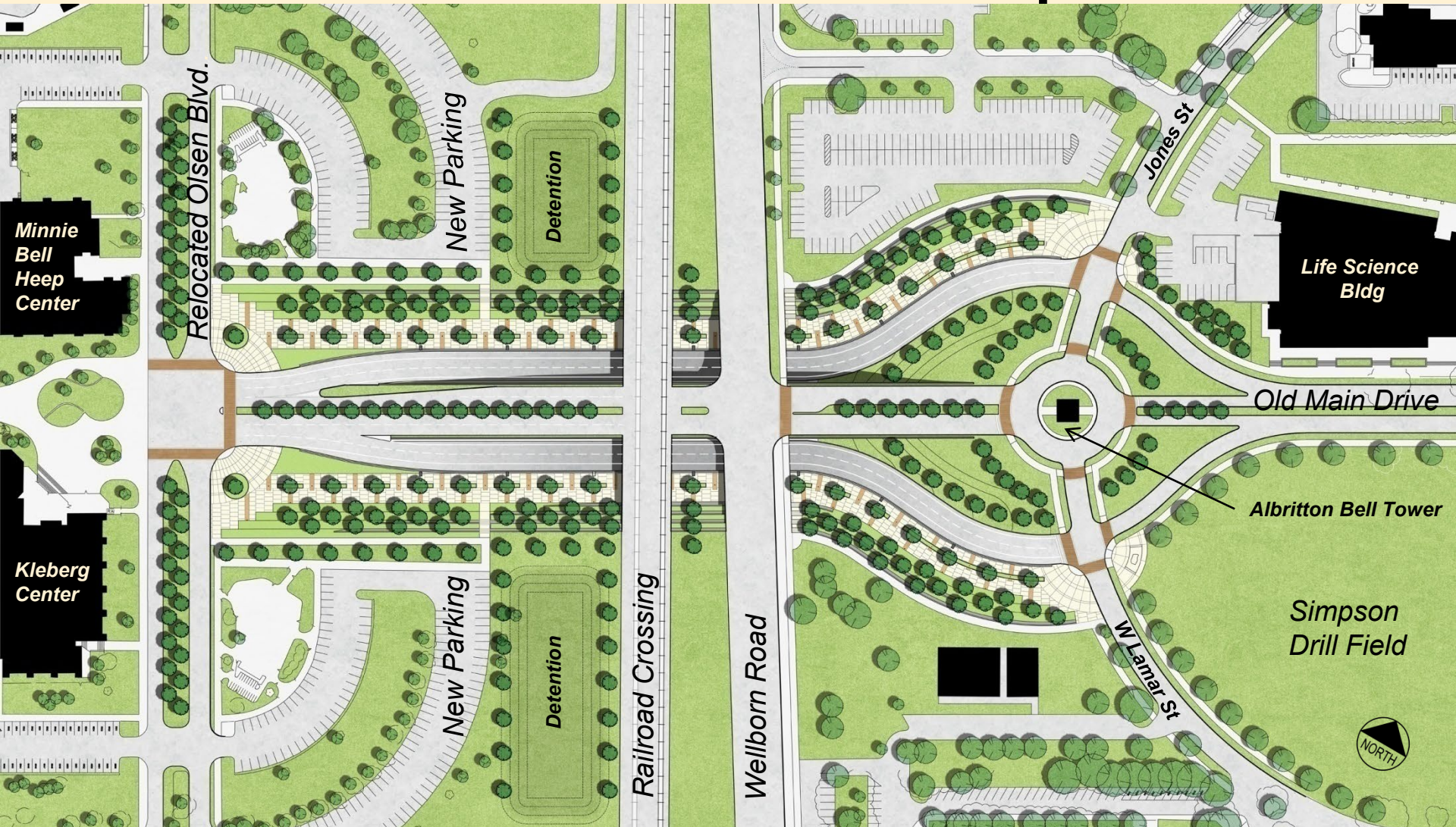


Wellborn Road Grade Separation

June 2011 – January 2013

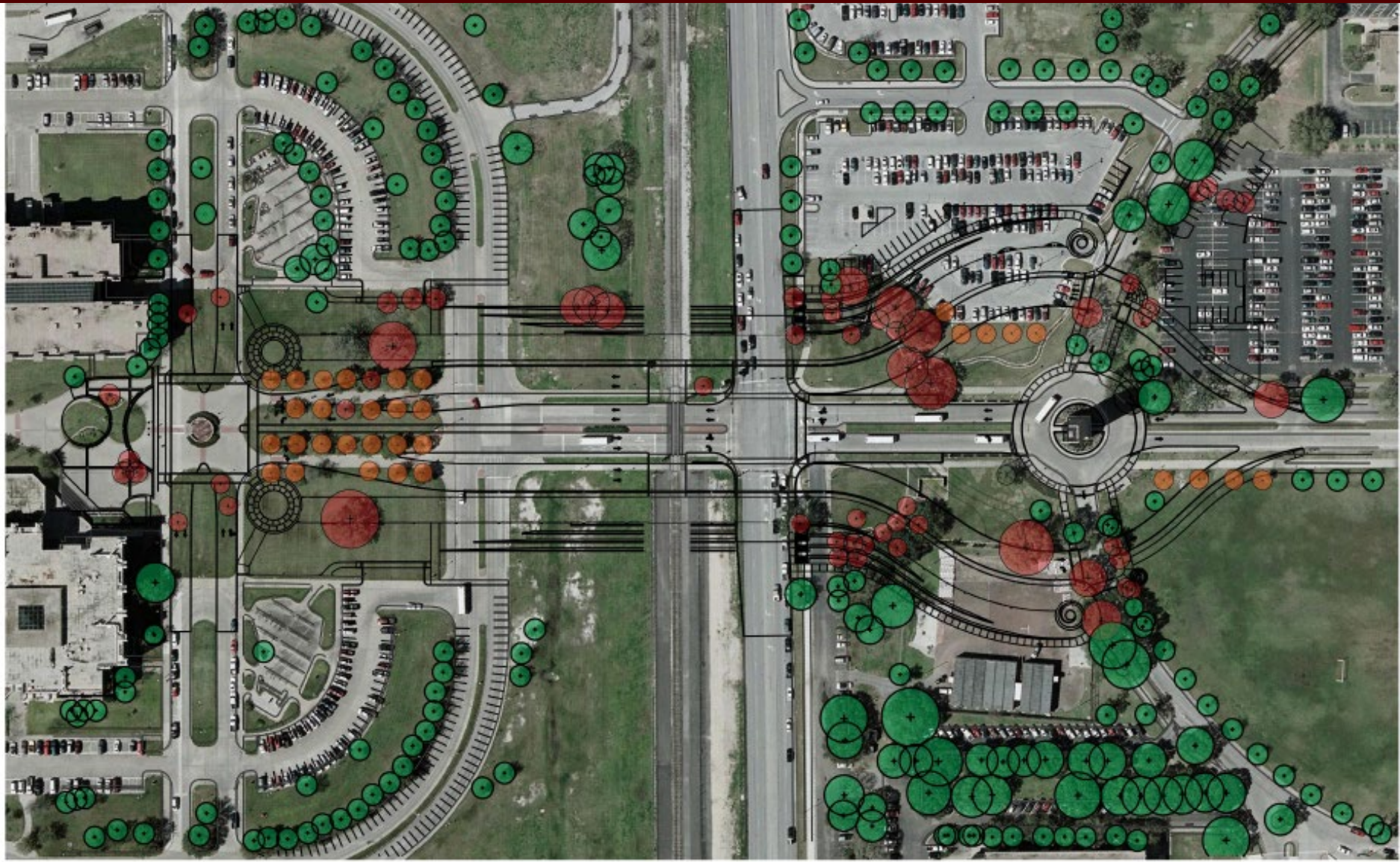


Wellborn Road Grade Separation



Wellborn Road Grade Separation

- FP&C project
- \$34 million
- Wellborn and Old Main will remain open but there will be lane closures
- June 2011 – January 2013



THIS DRAWING IS CONCEPTUAL IN NATURE AND IS SUBJECT TO CHANGE.
 NO WARRANTY IS GIVEN OR IMPLIED AS TO THE ACCURACY OR COMPLETENESS OF THE INFORMATION.
 THE ACTUAL DESIGN, LOCATION OR CHARACTER OF THE PLANTS SHOWN
 THIS PLAN IS NOT FOR PERMIT OR CONSTRUCTION PURPOSES.

CONCEPTUAL DRAWING
 MAY 03, 2019
 CCA PROJECT NO. 108-103

TAMU WELLBORN ROAD

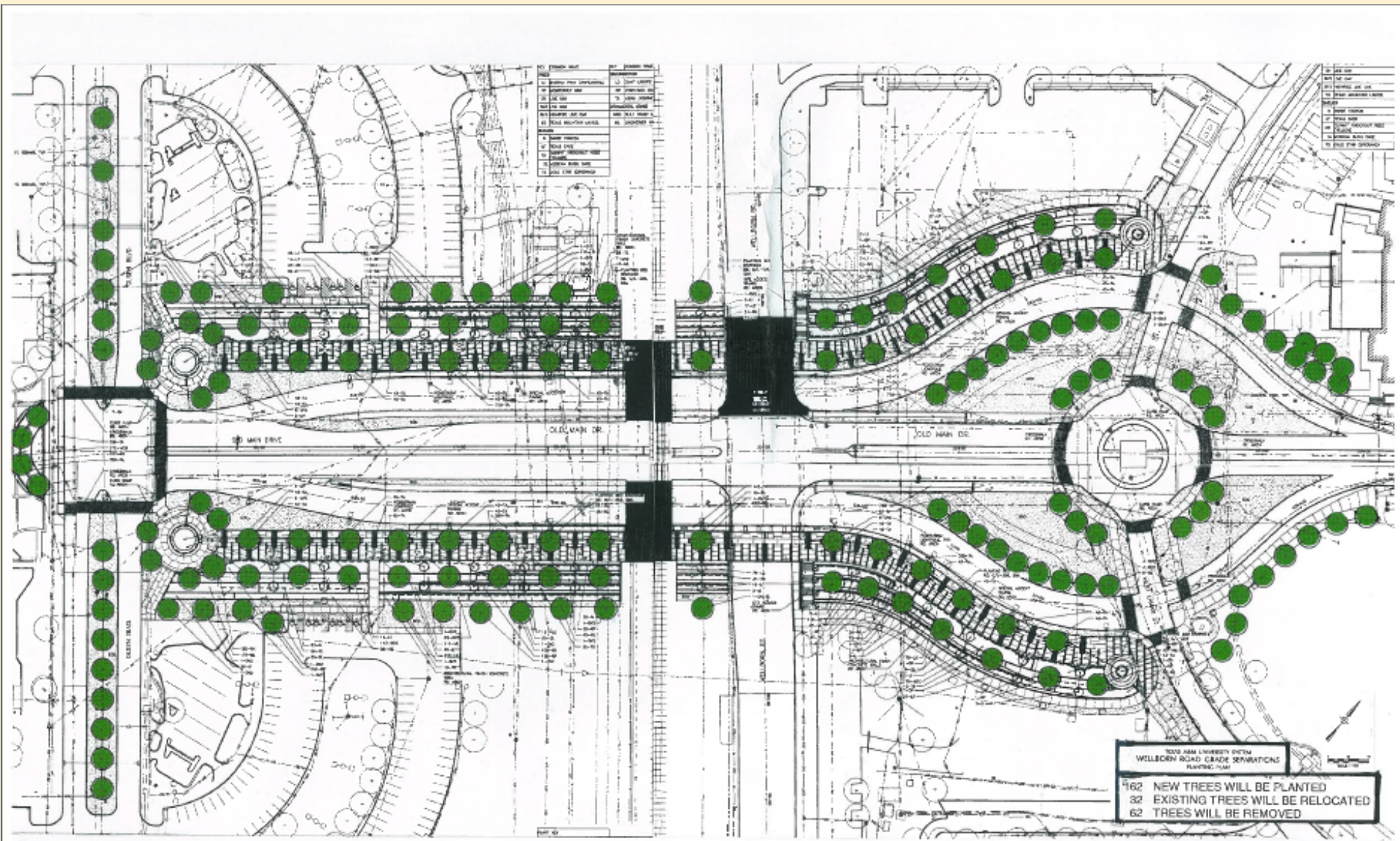
Tree Removal Exhibit
 Landscape Improvements
 Texas A & M University
 College Station, Texas

LEGEND:

- EXISTING TREE TO REMAIN
- EXISTING TREE TO BE REMOVED
- EXISTING TREE TO BE RELOCATED

 **CLARK CONDON ASSOCIATES**
 LANDSCAPE ARCHITECTURE

10201 Stella Link Road Houston, Texas 77055
 Tel: 713.871.1124 Fax: 713.871.0480
 www.clarkcondon.com



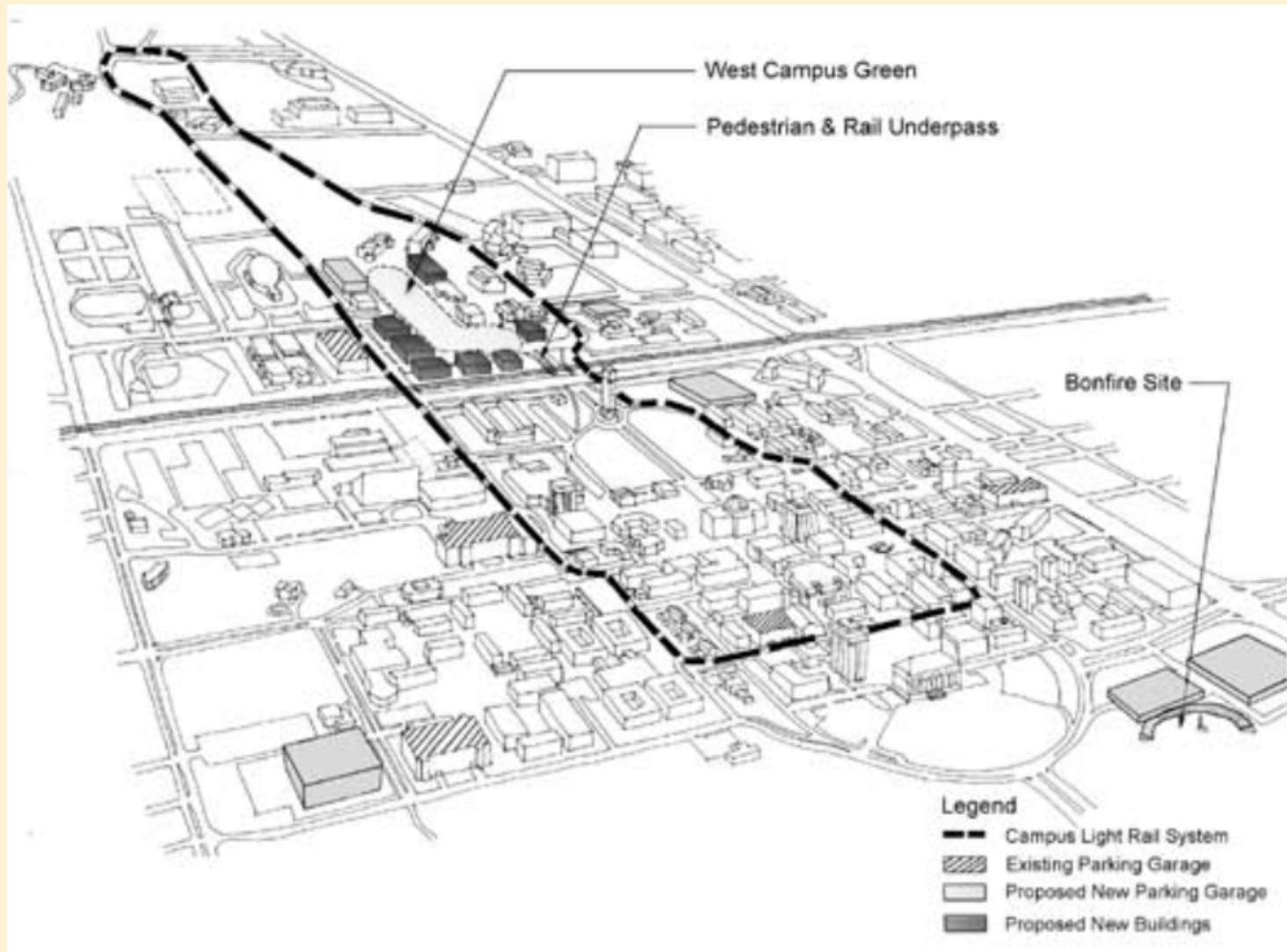
NO.	DESCRIPTION	QUANTITY
1	1" DIA. TREE	162
2	2" DIA. TREE	32
3	3" DIA. TREE	62

NO.	DESCRIPTION
1	1" DIA. TREE
2	2" DIA. TREE
3	3" DIA. TREE

3200 AAM UNIVERSITY DRIVE
 WILLBROS ROAD GRADE SEPARATIONS
 PLANTING PLAN

162	NEW TREES WILL BE PLANTED
32	EXISTING TREES WILL BE RELOCATED
62	TREES WILL BE REMOVED

Vision 2020



<http://transport.tamu.edu/parking/forums.aspx>

Peter W. Lange
Executive Director
plange@tamu.edu